



NORDcanopy

HR-E Grease Canopies

Laser welded structure

Efficient HFK cyclone filters protected as a utility model

Energy efficient LED lights

Registered design no. 007972823-0001

www.nordcooking.com

General

The NORDcanopy product portfolio consists of canopies and related air treatment products for use in commercial and industrial kitchen ventilation to create a comfortable and hygienic work environment. Our products combine stylish design with highly effective grease, heat and odor removal performance for your project. Thanks to our highly efficient HFK centrifugal filters, 95% of cooking greases can be eliminated from the kitchen exhaust airstream.

We at ETS Nord know that no projects are exactly alike. We have designed our canopies to be modular, so we can custom design and manufacture a NORDcanopy solution to meet your each and every project requirement or technical need.

NORDcanopy products are manufactured from stainless steel according to standards EN 10088- 2:2014, EN 1.4301 or AISI 304 (AISI 304, surface 2K).

HR Grease Canopies

HR-C
Grease canopy

aSAP



HR-E
Grease canopy

aSAP



HR-V
Grease canopy

aSAP



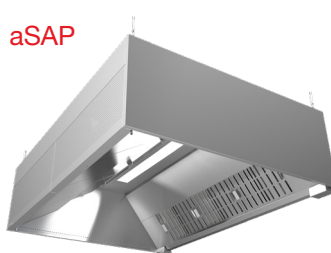
HR-G
Grease canopy HIGH CAPACITY

aSAP

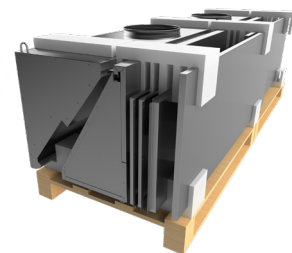


HR-H
Hybrid canopy

aSAP

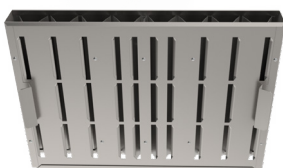


aSAP Solution



Accessories

HFK Grease filter



FET "Helping hand"
Grease filter removal tool



Cover plates



HR-E Grease Canopy

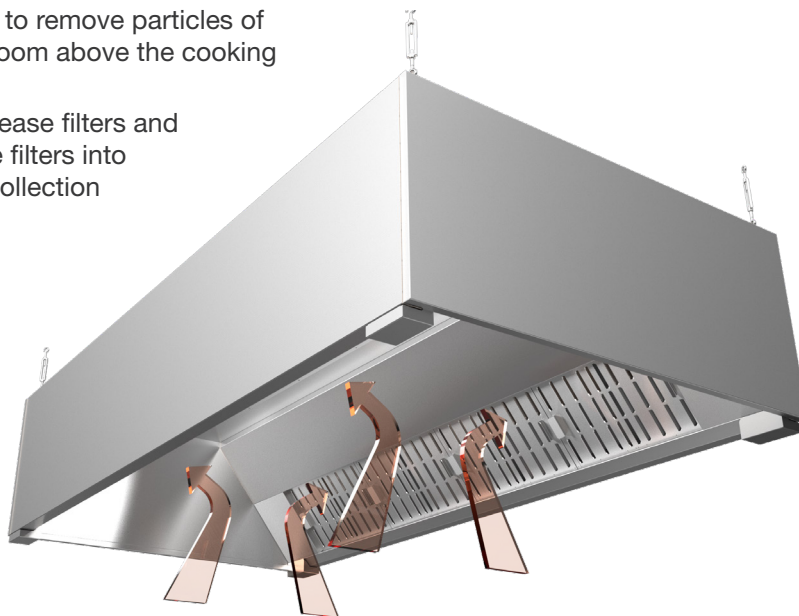
The kitchen canopy ensures a clean, hygienic and comfortable work environment by removing pollutants, excessive heat and grease from your commercial kitchen operation.

Operation

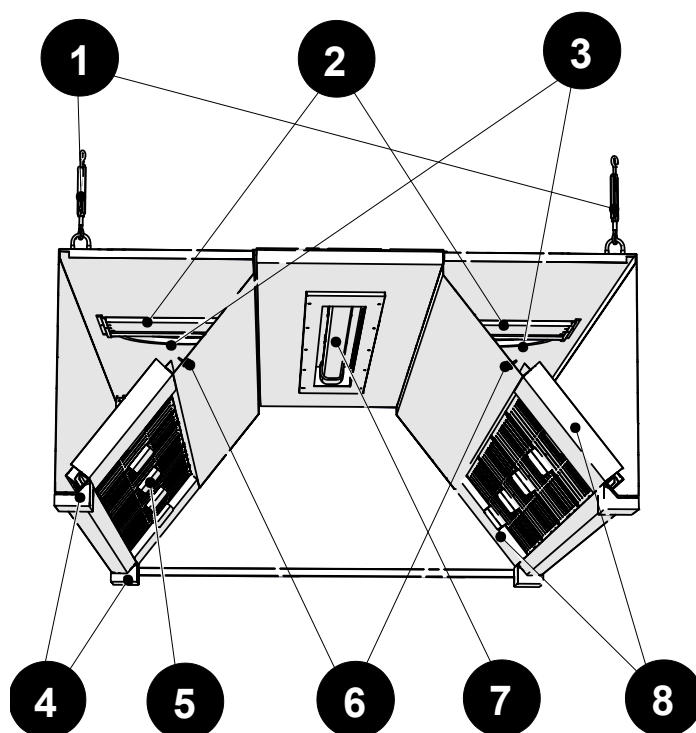
- The function of the kitchen canopy is to remove particles of heat, grease and other dirt from the room above the cooking appliances.
- Contaminated air is drawn into the grease filters and the grease drains then down from the filters into the collection channel leading to its collection container.

Recommended Data

Length L	Extraction airflow l/s (Δp_{tot} 14-48 Pa)
1000	280-520
1500	420-780
2000	560-1040
2500	700-1300



Construction



- 1 - Suspension points
- 2 - Exhaust air connection
- 3 - Exhaust air regulating plate
- 4 - Grease collection container
- 5 - HFK grease filters
- 6 - Airflow measuring nipples
- 7 - Lighting
- 8 - Blind panel for grease filter rail

- The canopy is made from stainless steel (AISI 304, surface 2K).
- Duct connections are equipped with rubber gaskets.
- The laser welded end walls of the exhaust chamber prevent the possible spillage of grease from the inside of the chamber, thereby reducing the possibility of bacteria forming in the joints of the parts.
- The side walls of the hood are a closed structure and air tight.
- Easy-to-clean surfaces.
- Exhaust pipes can be connected and insulated via the removable ceiling panel.
- A modular hood is supplied without partition walls.
- Adjustable suspension hooks are included.



Lighting

Professional kitchens require functional lighting to ensure that employees have a safe and effective work environment. ETS NORD professional kitchen canopies use the next generation of energy-efficient recessed LED fluorescent lamps and LED-Spot luminaires, which can save as much as 50% more energy compared to old technologies.

Grease removal canopies include light fixtures integrated into their ceilings, protected by an aluminum and glass casing.

The size and number of light fixtures are determined by the size of the canopy, to ensure there is enough light output for the entire workspace.



Luminaries:

Canopy modul length (mm)	Luminaries	Lighting length (mm)	Energy use (W)	Light color	Color temperature (K)	Color rendering index (Ra)	Flux (lm)
$1000 \leq L < 1600$	LED770	769	17	840	4000	80	2250
$1600 \leq L < 1900$	LED1370	1350	41	840	4000	80	4900
$L \geq 1900$	LED1670	1669	54	840	4000	80	6800

Spot LED lighting fixtures

Light colour (designation) - Cool White

Light colour - 4000 K

Housing material - Aluminium

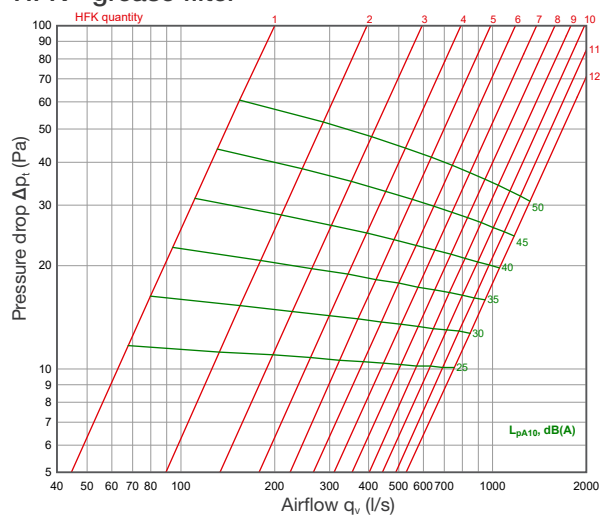
Colour separation index - > 80 (Ra)



Canopy modul length (mm)	Spot LED Quantity	Energy use (W)	Flux (lm)	Radiation angle
$1000 \leq L < 1500$	2	16	1340	36°
$1500 \leq L < 2000$	3	24	2010	36°
$L \geq 2000$	4	32	2680	36°

Technical data

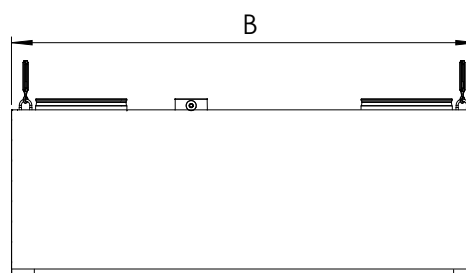
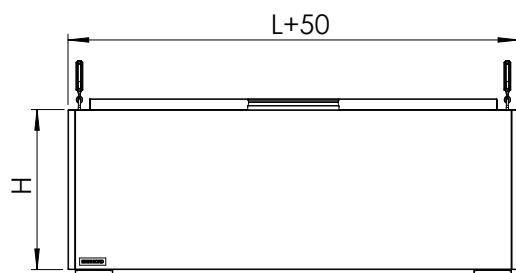
HFK - grease filter



Modul dimensions

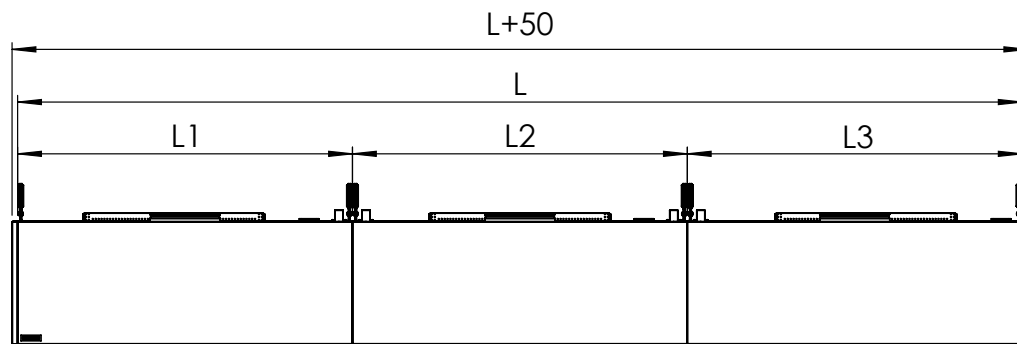
Dimensions, mm

L Length	1000, 1100, ..., 2400, 2500
B Width	1000 (available with Spot LED) 1100, 1200, ..., 1900, 2000
H Height	400, 550

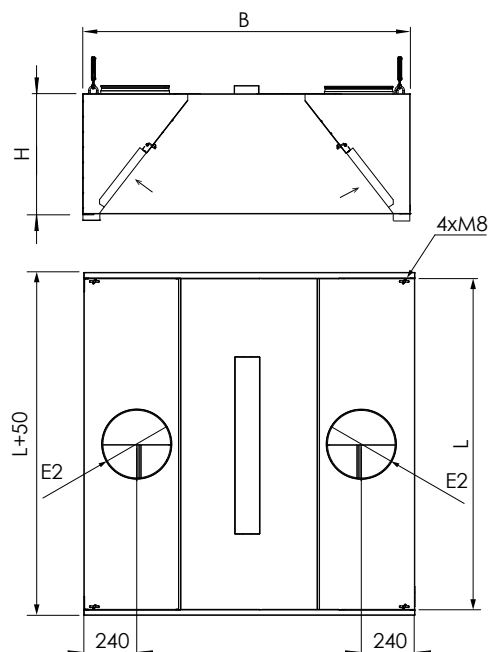


Canopy lengthening with modular sections

- Hoods consisting of several modules are made without a partition wall.
- The maximum size of one module is 2500x2000 mm.
- Preferred length dimensions are 1000, 1500, 2000 mm.
- For connecting the modules see the installation manual.



HR-E Wall installation, 1-part, E2 - two exhaust air chambers



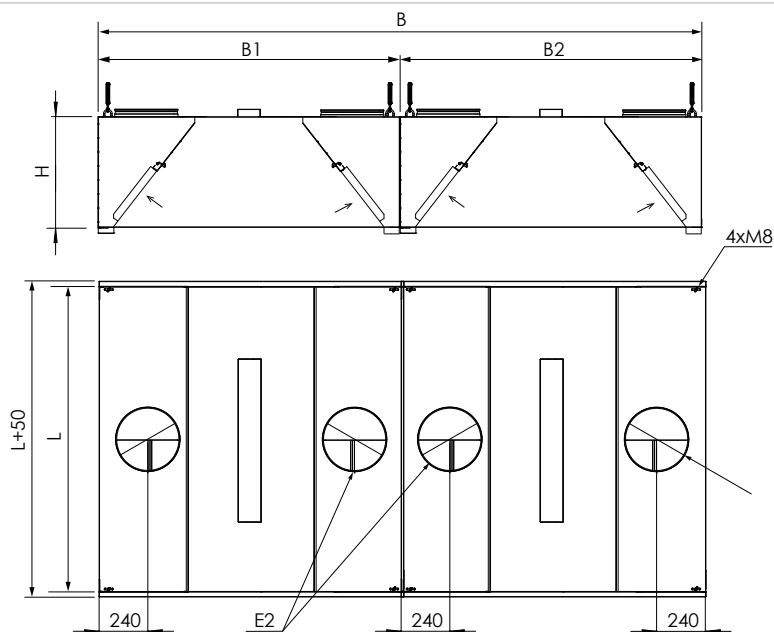
Modul dimensions, mm

L Length	1000, 1100, ..., 2400, 2500
B Width	1000 (available with Spot LED) 1100, 1200 ..., 1900, 2000
H Height	400, 550
E2, E4	200, 250, 315

HR-E-2 island installation, 2-part, E2 - two exhaust air chambers

Modul dimensions, mm

L Length	1000, 1100, ..., 2400, 2500
B Width	2000 (available with Spot LED) 2200, 2200 ..., 3800, 4000
B1/B2 Width	1000 (available with Spot LED) 1100, 1200, ..., 2000
H Height	400, 550
E2, E4	200, 250, 315



Product marking

Marking - Dimensions - Exhaust air - Grease filters - Lighting

Marking

- HR-E - 1 module in width
- HR-E-2 - 2 modules in width

Dimensions

- L - Length
- B - Width
- H - Height

Exhaust air

- E2 - Two exhaust air chambers
- E4 - Two exhaust air chambers, filters in dual row
- Diameter of exhaust air connection
- Quantity of exhaust air connections

Grease filters

- HFK
- Grease filter quantity

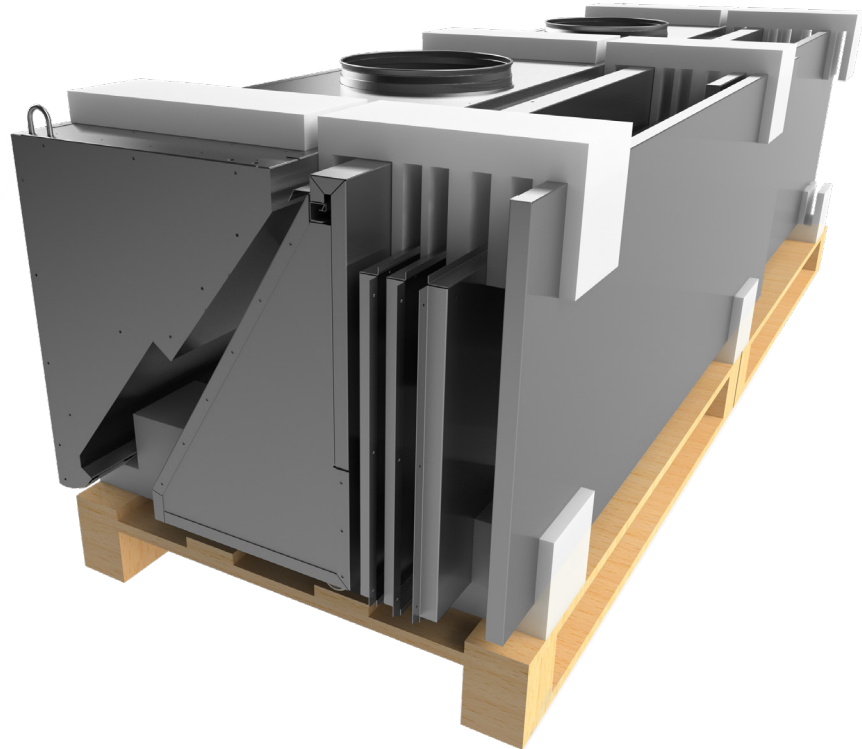
Lighting

- LED770 - L=769, 17W
- LED1370 - L=1369, 41W
- LED1670 - L=1669, 54W
- SpotLED - 8W
- Quantity of lighting fixtures

Example: HR-E 3000x1500x550 - E2=315x4 - HFKx12 - LED770x2

aSAP solution – a Self Assembly Package

- When access to the job site or kitchen space is limited, an ETS NORD aSAP self-assembly package can be the perfect solution.
- Narrow passageways and complex floor plans no longer get in the way!
- This is a compact, easy to ship, 5-step assembly version of our canopies to be put together at the job site.
- The canopy is delivered as ready-made modules with installation instructions.



Accessories

Cover plates

Mounted in the area between canopy and ceiling, when conduits and other components are to be concealed.



FET "Helping Hand" filter removal tool

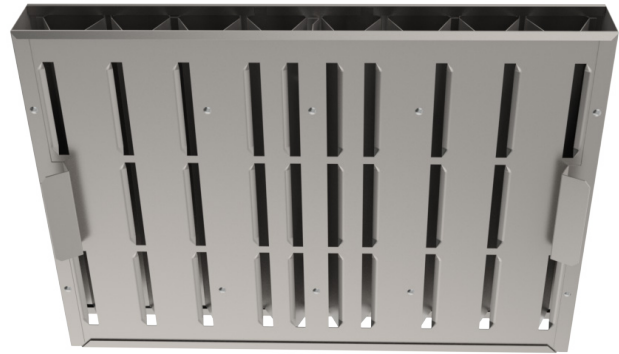
- With the ETS NORD "Helping Hand" filter tool, professional kitchen operators can safely and easily service their grease filters.
- Helping Hand allows grease filters to be removed and replaced without the cumbersome need to climb on or reach over kitchen equipment.
- The daily filter washing process is significantly simplified, thus ensuring its completion by the responsible staff.
- The tool's length is fully adjustable, thereby enhancing ergonomic comfort.



HFK Grease Filter

HFK is a high efficiency grease filter designed for use in ventilation hoods of commercial kitchens or other food production facilities. They are positioned in the hood exhaust plenum above cooking appliances (stoves, grills, etc.) and separate grease and other particles out from the exhaust air stream.

The ETS NORD HFK grease filter is protected by utility patent no. 01310.



- High efficiency captures 97% of 10 micron particles
- Functions well even with variable air volume systems
- Low pressure drop provides energy-efficient operation
- Flame resistance class A according to DIN 18869-5
- Easy to maintain

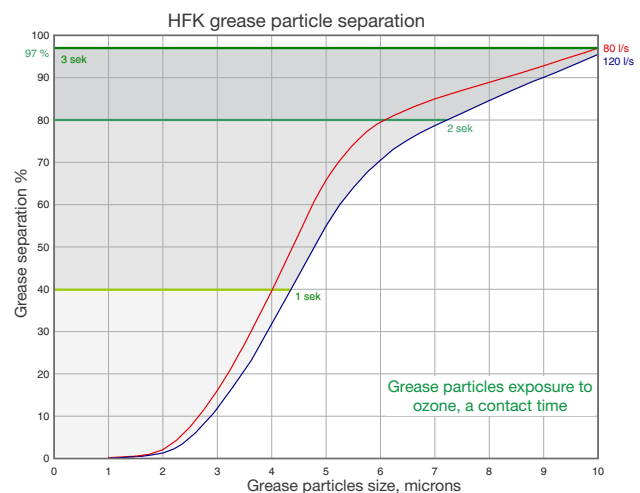
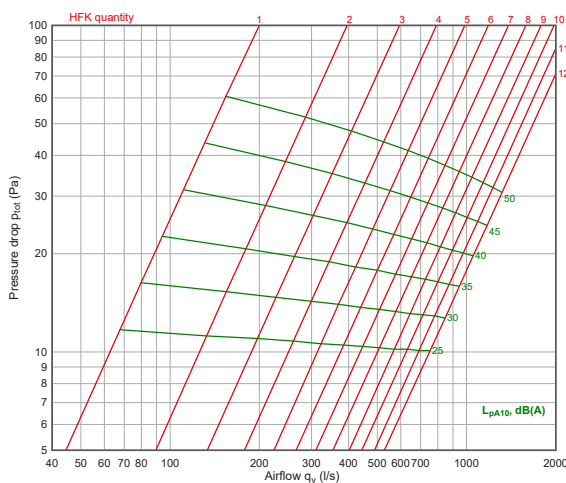
Material and Design

HFK filters are manufactured from AISI 304 stainless steel. They are assembled with rivets to ensure their durability through many years of use in challenging kitchen environments.

Operation

The greasy effluent from cooking appliances is pulled through the openings in the front panel of the filter. Our patented double-triangular cross-section within the chamber causes a high speed centrifugal swirling of the air. The rapid change of trajectory of the grease particles causes them to collide with the filter surfaces, resulting in their effective separation from the air stream. The grease then drains from the filter down and into the grease collection channel of the hood. The filtered air continues on into the kitchen exhaust system through the top and bottom orifices of the filter.

The optimal operating conditions of the HFK Grease Filter are under a pressure drop from 12-48 Pa with an airflow through each filter from 70-130 l/s, ensuring an energy efficient operation.



Installation

HFK Grease Filters are easily inserted into the filter installation rails extending across the entire length of the hood.



ETS NORD AS

Address: Peterburi tee 53
11415 Tallinn
Estonia

Phone: +372 680 7360
info@etsnord.ee
www.etsnord.ee

ETS NORD Finland

Address: Pakkasraitti 4
04360 Tuusula
Finland

Phone: +358 0401 842 842
info@etsnord.fi
www.etsnord.fi

ETS NORD Sweden

Address: Järsjögatan 7
69235 Kumla
Sweden

Phone: +46 707 80 50 16
info@etsnord.se
www.etsnord.se

ETS NORD Denmark

Address: Nordholmen 6
2650 Hvidovre
Denmark

Phone: +45 9712 1314
info@etsnord.dk
www.etsnord.dk

