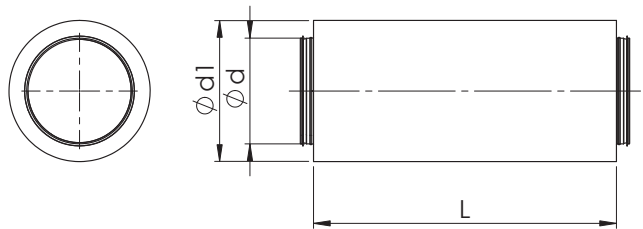
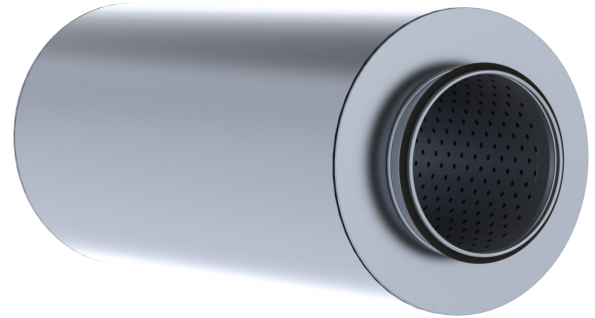


**NRF 50/NRP 50 Silencer**

Round silencer with 50 mm sound absorption. NRF-silencer's sound absorption material is mineral wool and NRP-silencer's a synthetic sound insulation. The perforated inner tube and outer shell are manufactured of galvanized steel. Between the inner tube and the insulation, there is fabric to prevent wool particles from the duct system.



**Sound attenuation and Dimensions**

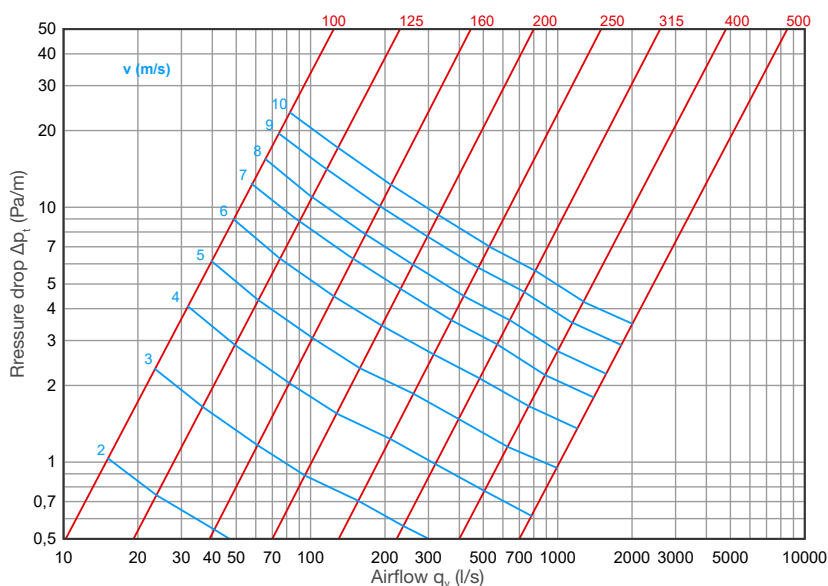
**NRF 50 (absorption material is mineral wool)**

Nominal size $\varnothing d$ mm	L, mm	$\varnothing d_1$ , mm	Sound attenuation (dB)								Weight, kg
			Mean frequency of octave band (Hz)								
			63	125	250	500	1000	2000	4000	8000	
100	300	200	3	4	8	15	26	26	20	11	2.3
100	600	200	4	7	13	25	41	47	33	17	4.1
100	900	200	5	8	18	34	49	49	41	23	5.2
100	1200	200	6	9	21	41	53	52	48	28	6.5
125	300	225	2	4	7	13	19	24	17	11	2.7
125	600	225	3	6	13	24	35	43	25	16	5.2
125	900	225	3	6	15	31	45	47	35	19	6.2
125	1200	225	4	6	20	42	54	49	41	23	7.5
160	300	260	1	3	5	12	16	19	11	9	3.0
160	600	260	2	4	10	20	28	31	18	13	6.1
160	900	260	2	6	14	27	37	35	24	17	8.6
160	1200	260	2	7	17	34	48	44	30	19	9.2
200	300	300	1	2	5	10	13	16	9	8	4.1
200	600	300	2	4	9	17	23	27	15	11	6.9
200	900	300	2	5	13	23	35	37	24	15	10.9
200	1200	300	3	6	16	30	45	44	24	16	12.0
250	600	350	2	3	8	15	22	21	12	10	8.6
250	900	350	2	4	12	22	31	28	15	13	11.7
250	1200	350	3	5	14	28	38	36	18	16	16.0
315	600	415	1	2	7	12	18	13	9	9	13.4
315	900	415	1	3	8	16	24	18	12	11	16.3
315	1200	415	1	4	10	20	32	22	14	13	21.1

**NRP 50 (absorption material synthetic sound insulation)**

Nominal size Ød mm	L, mm	Ød <sub>1</sub> , mm	Sound attenuation (dB)								Weight, kg
			Mean frequency of octave band (Hz)								
			63	125	250	500	1000	2000	4000	8000	
100	300	200	1	3	7	10	17	21	11	11	1,9
100	600	200	2	7	11	16	26	34	21	16	3,2
100	900	200	4	10	16	23	34	43	30	22	4,5
100	1200	200	6	12	20	29	42	45	35	28	5,9
125	300	225	1	2	5	8	16	17	10	8	2,2
125	600	225	1	5	9	14	23	27	17	13	3,6
125	900	225	3	7	13	19	32	40	25	19	5,1
125	1200	225	5	10	16	23	38	42	30	22	6,5
160	300	260	0	3	4	6	14	9	7	6	2,8
160	600	260	1	5	7	11	21	17	12	12	4,6
160	900	260	3	7	10	14	27	22	16	14	6,4
160	1200	260	4	8	13	19	33	28	19	17	8,4
200	300	300	0	3	5	8	16	17	10	10	3,3
200	600	300	1	4	6	10	20	20	12	12	5,3
200	900	300	2	5	9	12	24	23	15	13	7,3
200	1200	300	3	6	11	16	29	28	18	15	9,4
250	600	350	1	3	5	8	17	14	10	8	6,4
250	900	350	1	4	7	11	22	20	14	12	8,8
250	1200	350	2	6	12	19	32	47	36	28	12
315	600	415	0	2	4	7	16	9	9	8	7,8
315	900	415	1	3	5	9	20	13	11	12	11
315	1200	415	2	4	7	12	25	16	14	15	13
400	600	500	0	1	3	6	15	5	7	7	9,7
400	900	500	0	2	4	8	18	8	9	10	13,5
400	1200	500	0	2	5	10	23	9	12	12	15,9
500	600	600	0	0	1	4	9	3	4	4	12,1
500	900	600	0	1	2	6	12	5	5	5	16,9
500	1200	600	0	1	2	8	14	6	7	7	19,9

**Technical data**



**Product codes**

NRF 50 - d - L

**Marking**

- NRF 50 – absorption material mineral wool
- NRP 50 – absorption material synthetic sound insulation

**Diameter d**

**Lenght L**

**Example: NRF 50 315-900**