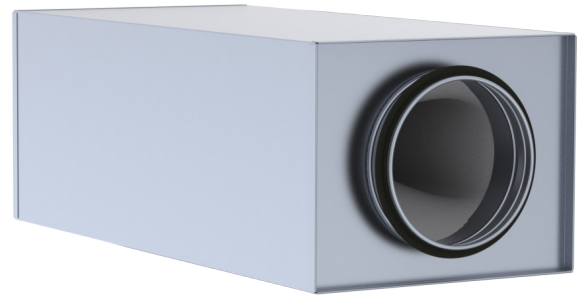


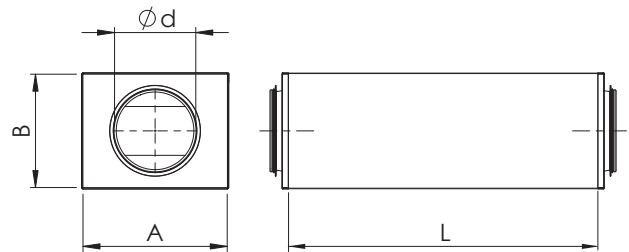
NKE Silencer

NKE rectangular silencer with round duct connections and without perforated sheet inside. Suitable for general ventilation system silencer, especially in situations where the silencer dimensions should be smaller and the absorption values should be good.



Design and Dimensions

NKE's outer shell is made of galvanized sheet steel. Connections are with rubber gaskets. Sound absorption duct element with good attenuation characteristics is made from special formed synthetic material and covered by fabric. Standard lengths 600 and 1000 mm.

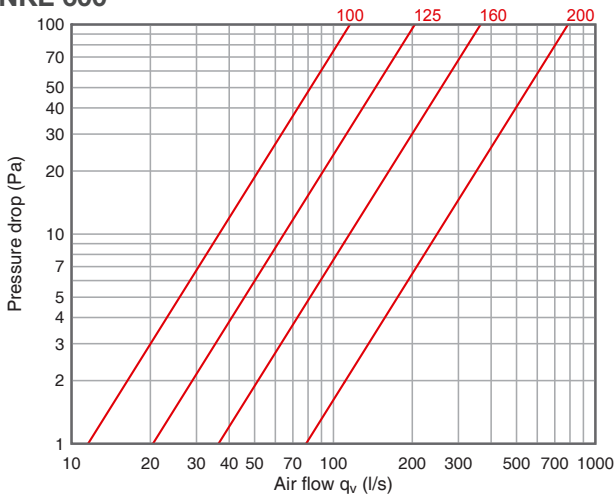


Sound attenuation

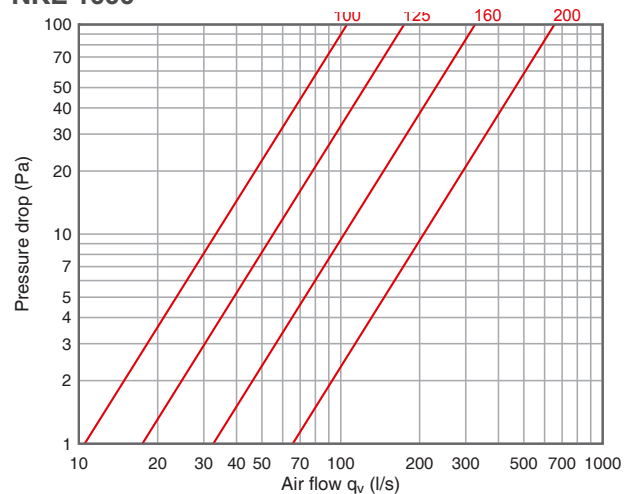
Nominal size Ød mm	L, mm	A, mm	B, mm	Sound attenuation (dB)								Weight, kg
				Mean frequency of octave band (Hz)								
				63	125	250	500	1000	2000	4000	8000	
100	600	215	160	8	7	16	19	25	38	38	36	3,6
125	600	245	185	7	7	11	17	27	31	25	23	4,2
160	600	285	225	6	7	10	15	20	22	21	18	5,0
200	600	325	260	8	5	9	12	7	17	13	15	5,9
100	1000	215	160	8	16	19	27	39	49	40	47	5,4
125	1000	245	185	8	11	15	25	39	47	38	35	6,2
160	1000	285	225	8	12	15	23	33	42	34	25	7,6
200	1000	325	260	8	12	13	24	27	37	21	23	8,7

Pressure drop

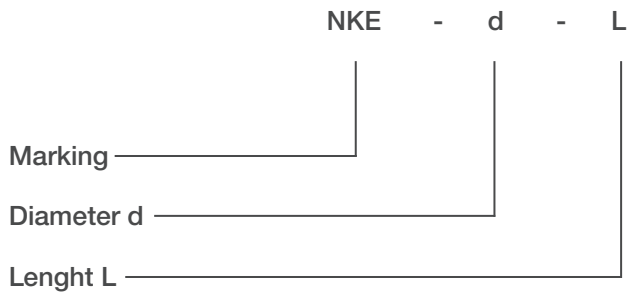
NKE 600



NKE 1000



Product codes



Example: NKE 125-600