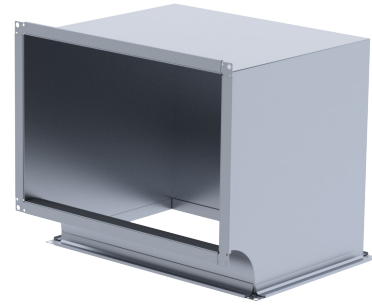


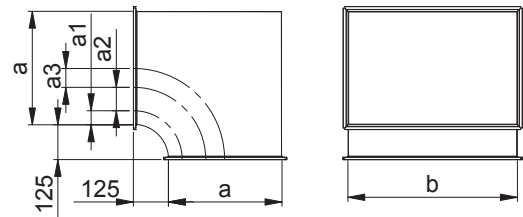
EKPK-T Bend

Bend with a rectangular external angle.
 In the event that side a > 400, the bend is provided with a reinforced guide.
 In the event that the bend angle is ≤ 45° there is no guide.
 For connection the bend is provided with flanges height 30 mm.

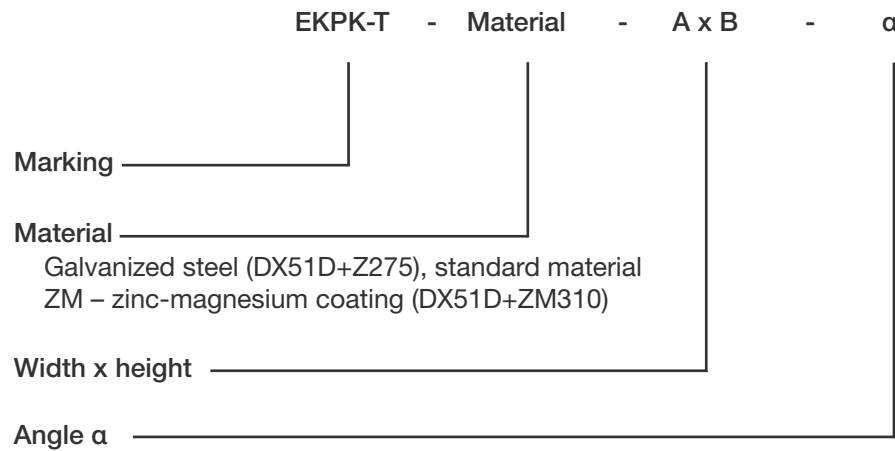


Location of guides

Dimension a mm	Numbers of guides	Distance between guides mm	
		a ₁	a ₂
>400 ≤ 800	1	a/3	-
>800 ≤ 1250	2	a/4	a/2



Product codes



Example: EKPK-T 600x400-45