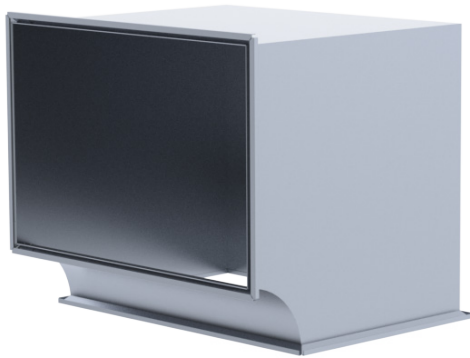
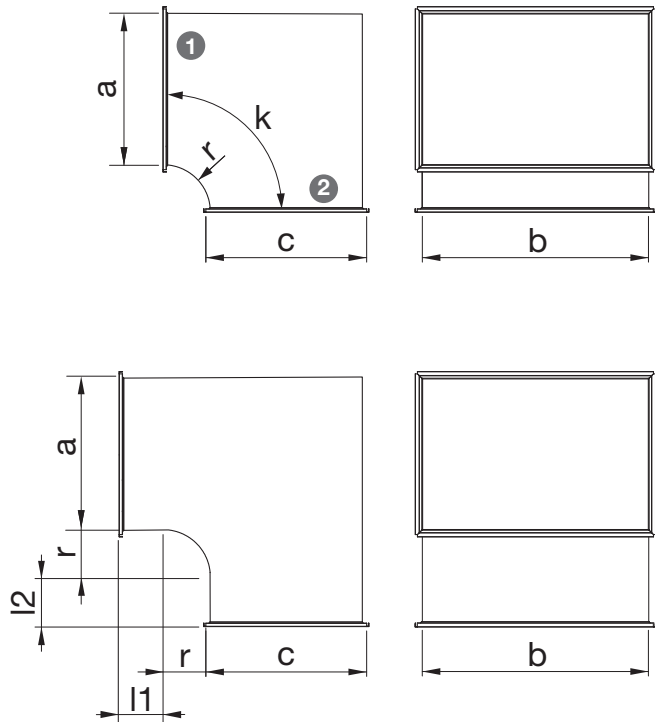


**EKPK Elbow**



Elbow with sharp outer corner.  
 Stiffened with a guide blade when side a > 400.  
 When angle ≤ 45°, no guide blade.  
 Standard radius is 125 mm.



**Product codes**

EKPK - Material - A x B - C x B - 90 - 125 - l1/l2 - Z

Product	_____
Material	_____
Galvanized steel (DX51D+Z275), standard material	
ZM – Zinc-magnesium coated steel (DX51D+ZM310)	
H – Acidproof stainless steel AISI 316	
Dimensions A x B	_____
Dimensions C x B	_____
Angle k	_____
Radius r	_____
Extension l1/l2 (optional)	_____
Duct connection	_____

Example: EKPK-H 800x400/500x400/90/r=125 Z/Z