

NORDdoor - Installation instructions

Use

For inspecting and cleaning the ventilation ducts, the access doors are installed in easily accessible places. Placement in the duct system:

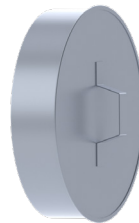
- The required distance between access doors depends on the construction and the cleaning method of the system.
- The locations and distances between the access doors should ensure the possibility for cleaning the ducts in their entirety.
- The access doors should be installed within fire barriers, into ducts close to bends of at least 45°, into horizontal ducts every 8 m (max. distance 10 m), and in branching points of the ducts.



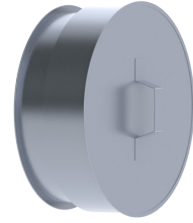
NALH



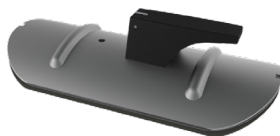
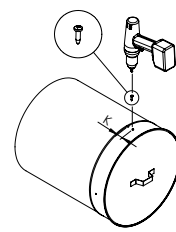
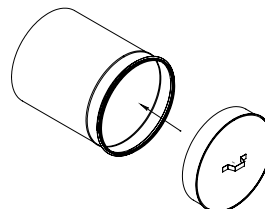
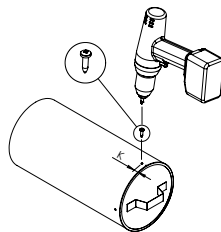
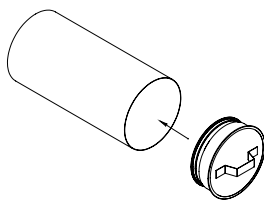
NALHE



NALMH



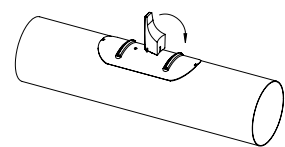
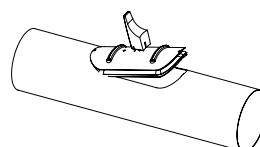
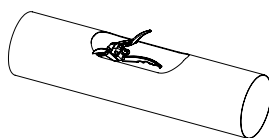
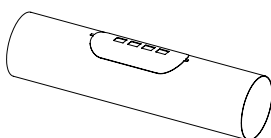
NALMHE



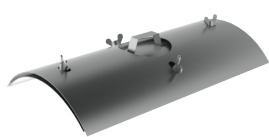
TL3

1. Attach the mounting template to the pipe directly in the longitudinal position.
2. Cut the edge along the label and finish the cut. Leave the mounting template alignment marks on the pipe.
3. Install the access door by using the opening alignment marks.
4. Lock the access door by twisting the handle down.

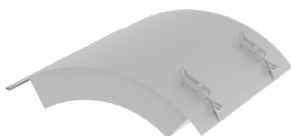
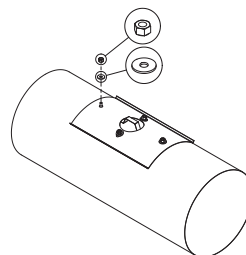
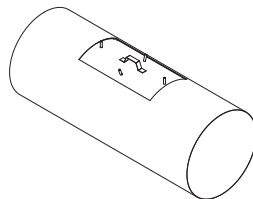
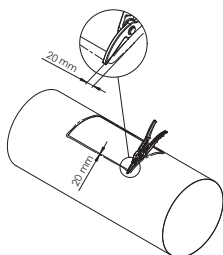
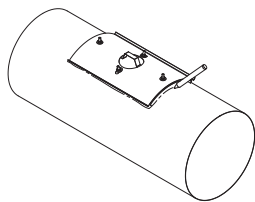
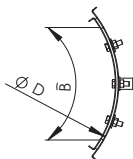
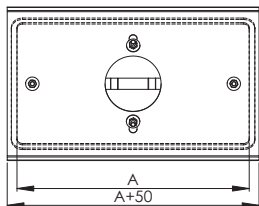
The quality of work is guaranteed by professional working methods.



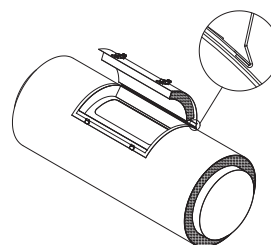
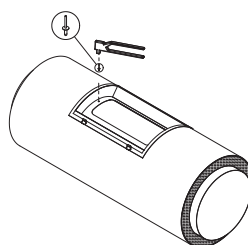
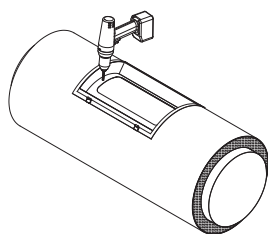
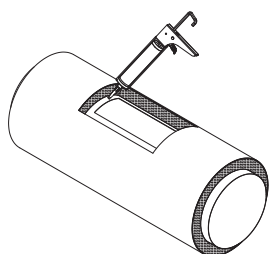
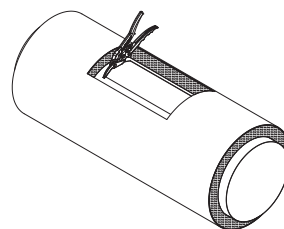
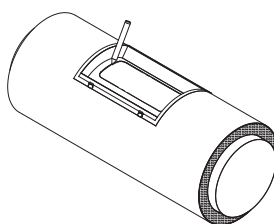
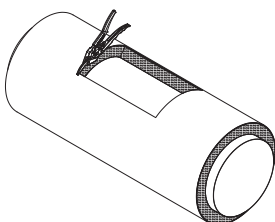
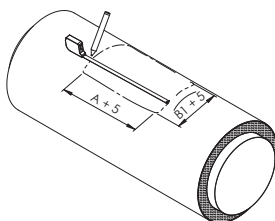
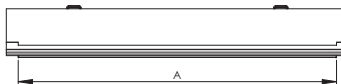
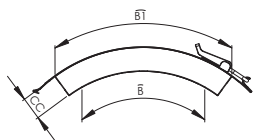
NORDdoor - Installation instructions



TLP

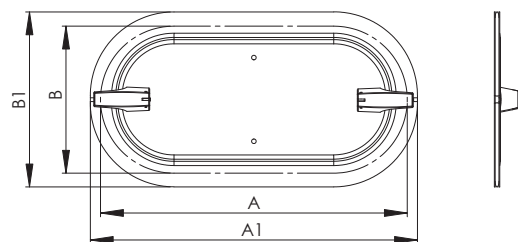
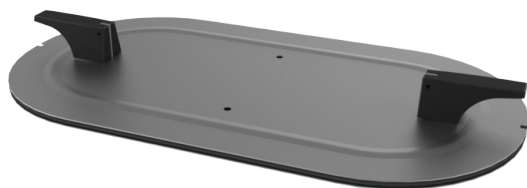


TLPE

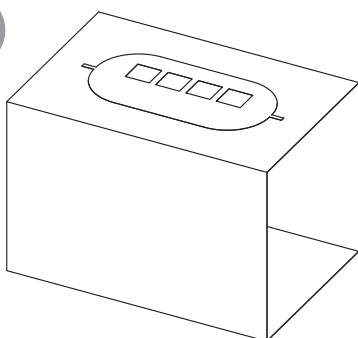


NORDdoor - Installation instructions

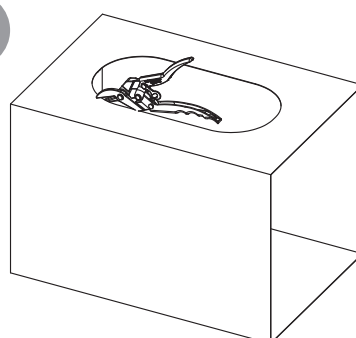
TL1



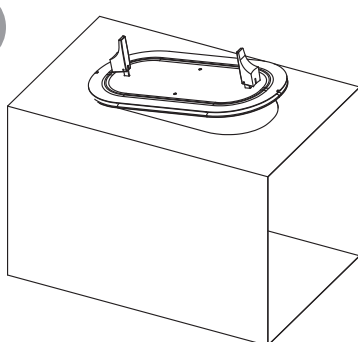
1



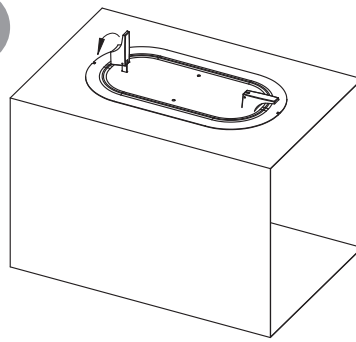
2



3

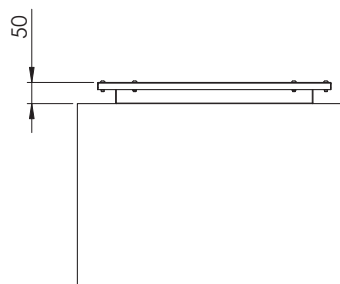
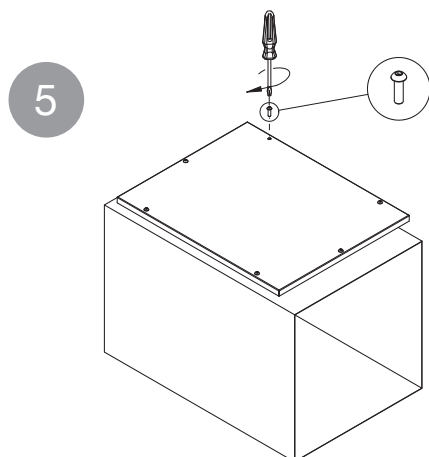
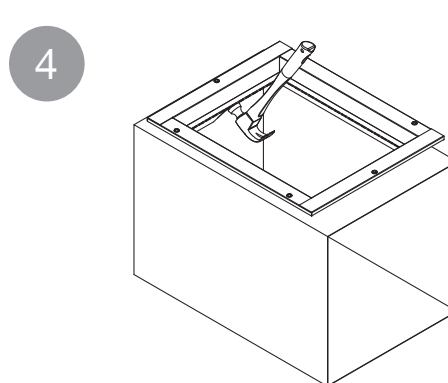
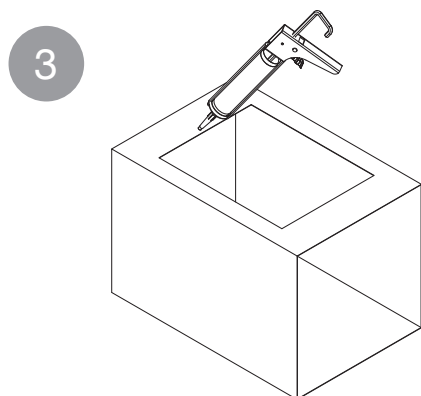
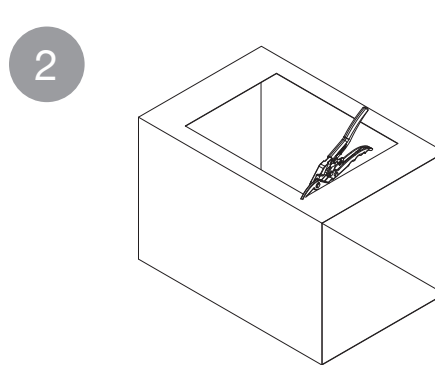
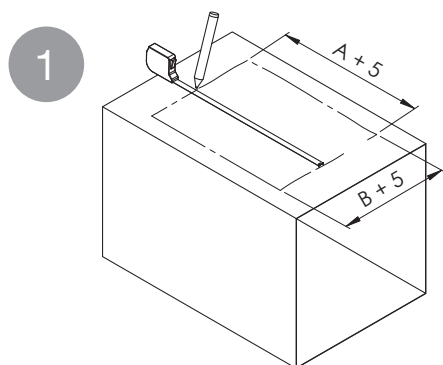
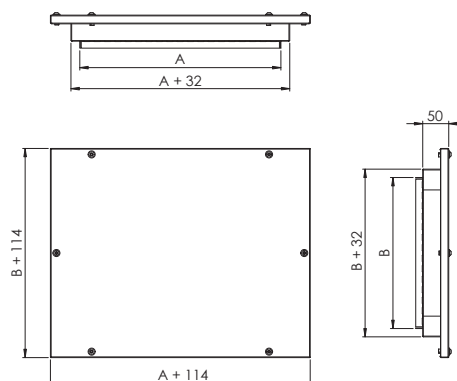
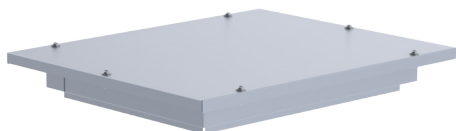


4

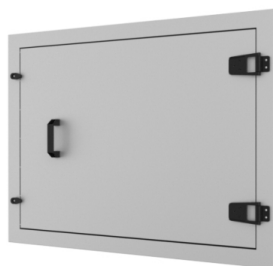


NORDdoor - Installation instructions

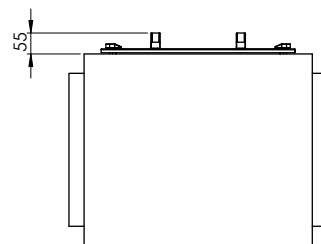
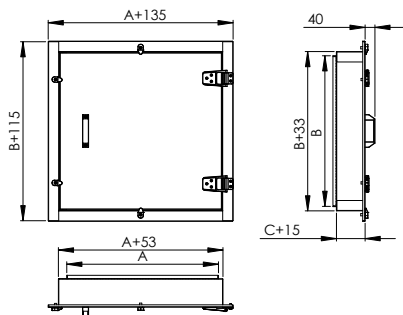
TLT



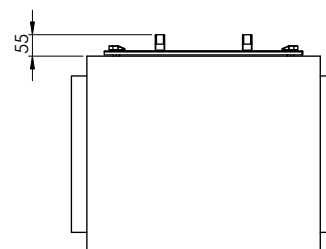
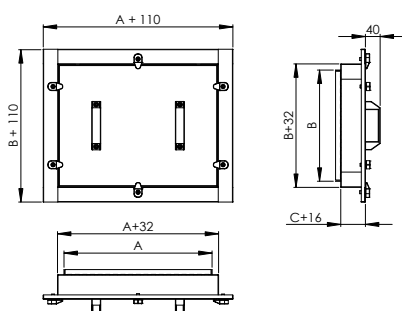
NORDdoor - Installation instructions



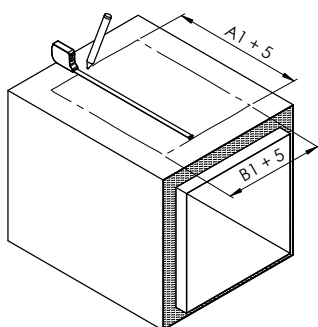
TLTU



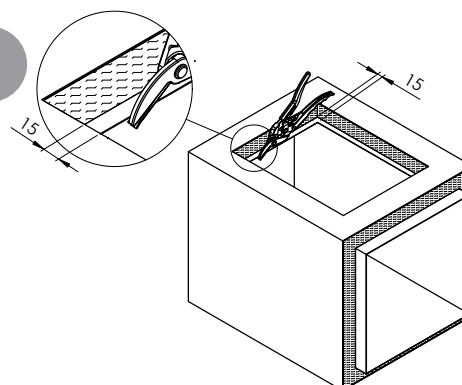
TLTK



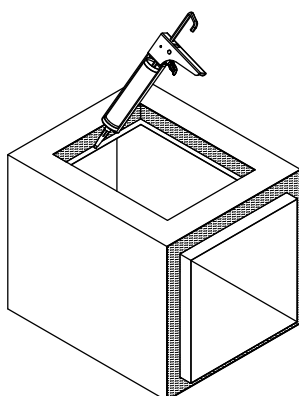
1



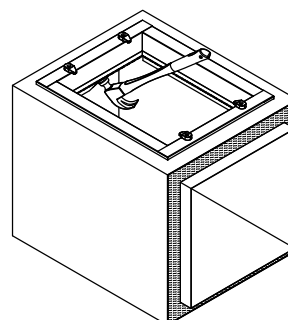
2



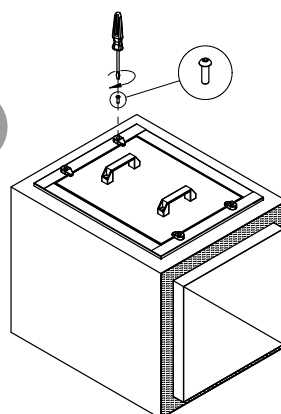
3



4

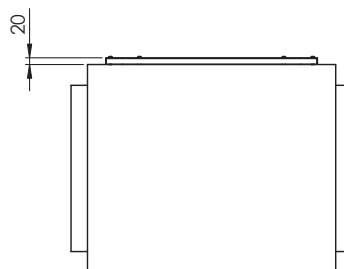
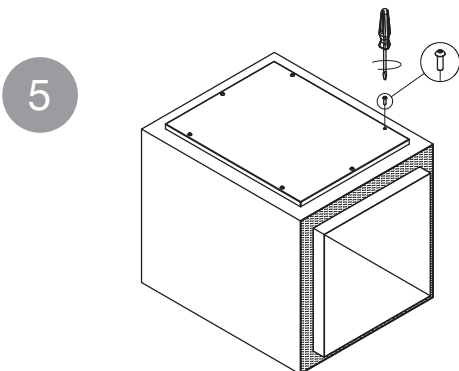
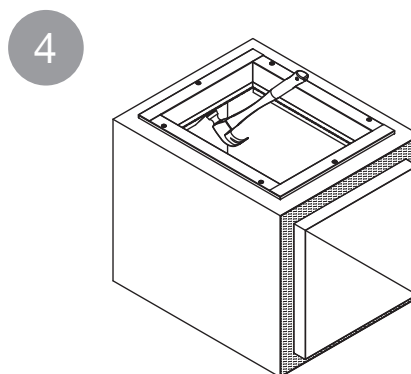
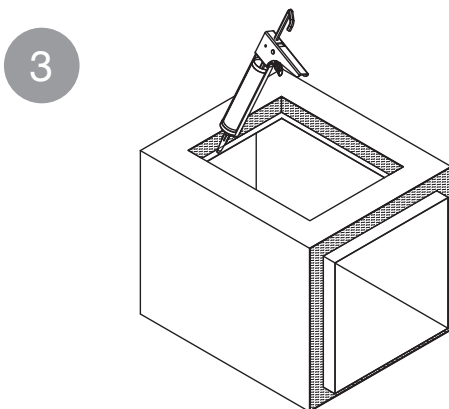
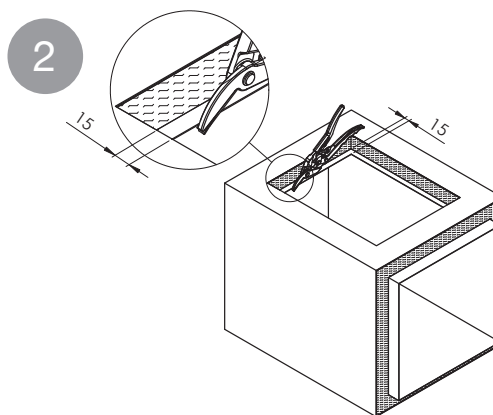
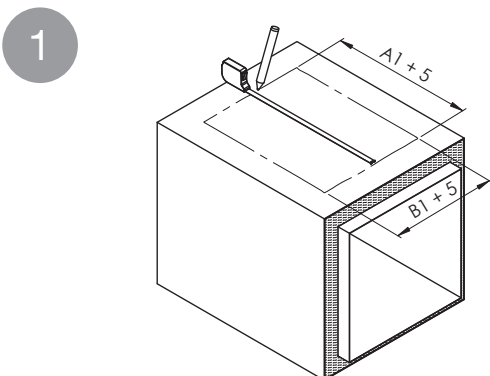
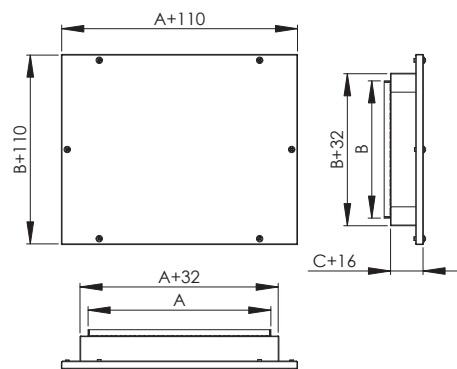
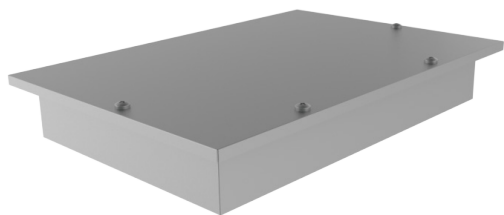


5

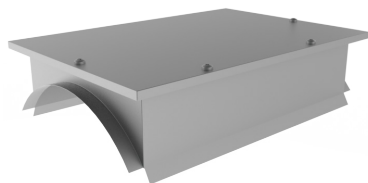


NORDdoor - Installation instructions

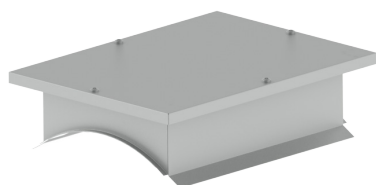
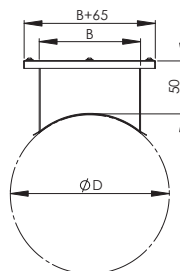
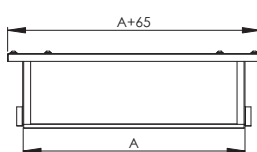
TLTE



NORDdoor - Installation instructions



TPL



TPLE

